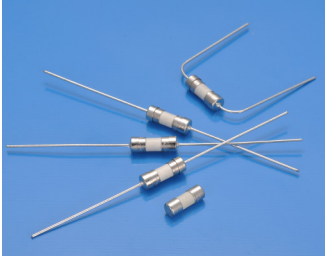
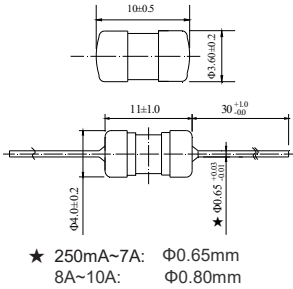


333 Subminiature Cartridge Fuse



Dimensions (unit in mm)



Main Characteristics

Subminiature Cartridge fuse; Fast-Acting (F)

Standard

IEC-60127-3/III

Materials

Tube: Ceramic Tube
End Caps: Nickel plated brass
Axial Leads: Nickel plated caps
Tin plated copper wires

Operating Temperature

-55°C to +125°C

Storage Conditions

+10°C to +60°C
Relative humidity: $\leq 75\%$ yearly average
Without dew, maximum 30 days at 95%

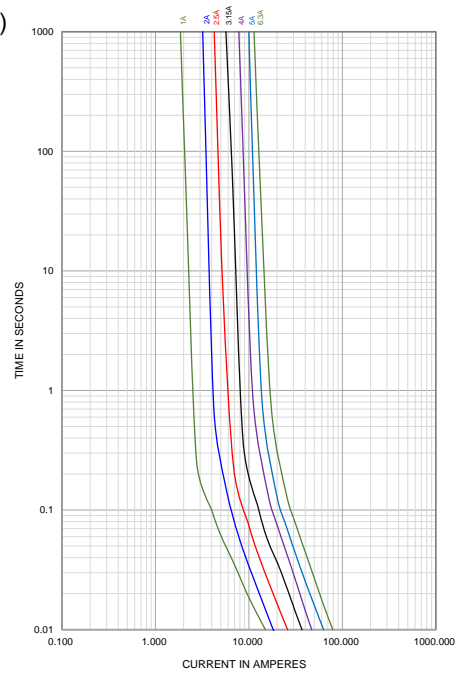
Vibration Resistance

120 cycles in 1 direction at 1 min. each
10-55Hz, 3 directions(X, Y, Z) in total
According to MIL-STD-202 Method 201A

Soldering Parameters

260°C. ≤ 5 sec (Wave Soldering)
350°C. ≤ 3 sec (Hand Soldering)
Soldering Peak:
260°C. 10 sec. (IEC 60068-20)

Average Current Curve(I-T Curve)



Time vs Current Characteristics: IEC-60127-3/III

Rated current	150%	210%	275%	400%	1000%
50mA~5A	>1h	<30min	10ms~3s	3ms~300ms	$\leq 20\text{ms}$
6.3A~10A	>1h	<30min	50ms~10s	5ms~400ms	$\leq 20\text{ms}$



Electrical Characteristics at 25°C

Amp Code	Rated Current	Rated Voltage	Max Voltage Drop(mV)	Max. Power Dissipation (mW)	Typical Cold Resistance (m Ω)	Nominal Melting I ² t(A ² sec)	Breaking Capacity	Approvals	
								cULus	TUV
0315	315mA	250V AC	400	331	201.0	0.152	50A @ 250V AC 50A @ 125V AC 35A or 10In/250V AC	●	○
0750	750mA		310	630	133.9	0.941		●	○
1100	1.00A		280	375	63.8	2.25		●	○
1150	1.50A		250	1050	36.7	2.77		●	○
1200	2.00A		240	1260	25.2	3.20		●	●
1250	2.50A		200	1313	21.0	6.75		●	○
1315	3.15A		180	1488	14.6	13.69		●	○
1400	4.00A		160	1680	10.9	20.09		●	○
1500	5.00A		150	1969	8.33	39.69		●	○
1630	6.30A		150	1969	7.00	62.41		●	●
1800	8.00A		150	1969	5.80	92.16		●	○
2100	10.00A		150	1969	4.73	156.3		50A @ 250V AC 50A @ 125V AC	●

Note: (1) Permissible continuous operating current is $\leq 100\%$ at ambient temperature of 23°C (73.4°F)
(2) The cULus certification by 125V and 250V; the others certification by 250V.

Ordering Information

Series	Amp Code	Supplementary Code	Qty
333			



Sales Contact
s1s01@betterfuse.com

Technical Support
Kenny@betterfuse.com

National High-tech Enterprise
SC 32C National Technical Committee Member of China
Intertek ISO 9001 Certified Company
Intertek ISO 14001 Certified Company
Intertek QC 080000 Certified Company
NQA IATF 16949 Certified Company

国家高新技术企业
SC 32C 国内专家组成员单位
ISO 9001 认证企业
ISO 14001 认证企业
QC 080000 认证企业
IATF 16949 认证体系