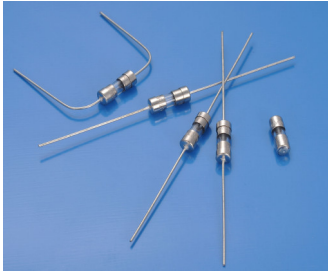
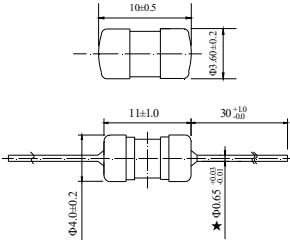


311 Subminiature Cartridge Fuse



Dimensions (unit in mm)



- ★ 250mA~7A: Ø0.65mm
- 8A~12A: Ø0.80mm

Main Characteristics

Subminiature Cartridge fuse; fast- Acting(F)

Standard

UL248-14

Materials

- Tube: Glass Tube
- End Caps: Nickel plated brass
- Axial Leads: Nickel plated caps
- Tin plated copper wires

Operating Temperature

-55°C to +125°C

Storage Conditions

- +10°C to +60°C
- Relative humidity: ≤75% yearly average
- Without dew, maximum 30 days at 95%

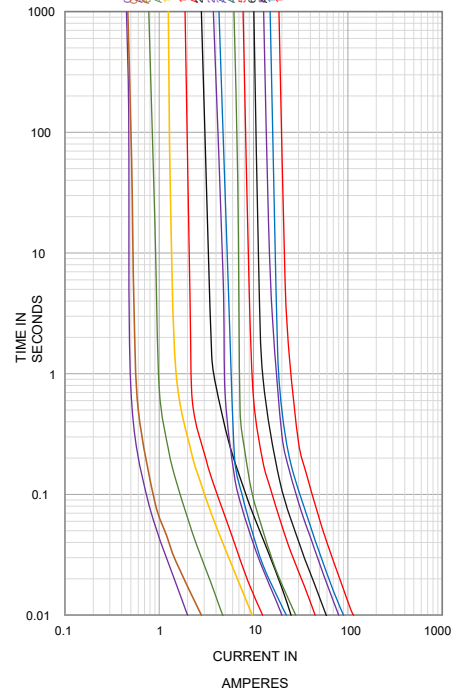
Vibration Resistance

- 120 cycles in 1 direction at 1 min. each
- 10-55Hz, 3 directions(X, Y, Z) in total
- According to MIL-STD-202 Method 201A

Soldering Parameters

- 260°C. ≤5 sec (Wave Soldering)
- 350°C. ≤3 sec (Hand Soldering)
- Soldering Peak: 260°C. 10 sec. (IEC 60068-20)

Average Current Curve(I-T Curve)



Time vs Current Characteristics: UL248-14

Rated Current	100%	200%
250mA~12A	>4h	<5s



Electrical Characteristics at 25°C

Amp Code	Rated Current	Rated Voltage	Typical cold Resistance (mΩ)	Nominal Melting I ² t(A ² sec)	Breaking Capacity	Approvals	
						cULus	
						125V	250V
0250	250mA	250V AC	540	0.040	50A @ 250V AC 50A @ 125V AC	•	•
0300	300mA		335	0.078		•	•
0500	500mA		182	0.225		•	•
0630	630mA		145	0.357		•	•
0800	800mA		131	0.576		•	•
1100	1.00A		70.0	0.940		•	•
1125	1.25A		62.8	1.56		•	•
1150	1.50A		52.0	3.45		•	•
1200	2.00A		31.5	6.25		•	•
1250	2.50A		32.3	4.00		•	•
1300	3.00A		22.0	11.9		•	•
1315	3.15A		23.1	4.97		•	•
1400	4.00A		15.5	7.84		•	•
1500	5.00A		12.0	20.3		•	•
1630	6.30A		9.73	34.5		•	•
1700	7.00A		8.20	48.8		•	•
1800	8.00A		7.80	64.0		•	•
2100	10.00A		6.31	81.0		•	•
2120	12.00A		5.31	132		○	○

Note: 1. Permissible continuous operating current is 100% at ambient temperature of 23°C (73.4°F)
2. The current values used for calculating I²T should be within the standard range of 8ms ~ 10ms.

Ordering Information

Series	Amp Code	Supplementary Code	Qty
311			



Sales Contact
s1s01@betterfuse.com

Technical Support
Kenny@betterfuse.com

National High-Tech Enterprise
SC 32C National Technical
Committee Member of China
Intertek ISO 9001 Certified Company
Intertek ISO 14001 Certified Company
Intertek QC 080000 Certified Company
NQA IATF 16949 Certified Company

国家高新技术企业
SC 32C 国内专家组成员单位
ISO 9001 认证企业
ISO 14001 认证企业
QC 080000 认证企业
IATF 16949 认证体系