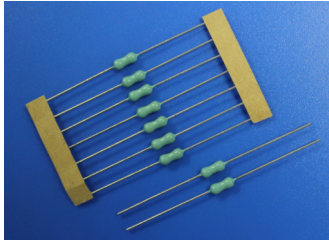


# 211 Micro Cartridge Fuse



**Main Characteristics**  
 Micro Cartridge fuse; Fast-Acting(F)  
**Standard**  
 UL248-14

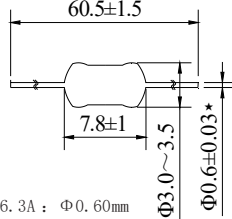
**Materials**  
 Tube: Ceramic Tube  
 End Caps: Nickel plated brass  
 Axial Leads: Nickel plated caps  
 Tin plated copper wires

**Operating Temperature**  
 -55°C to +125°C  
**Storage Conditions**  
 +10°C to +60°C  
 Relative humidity: ≤75% yearly average  
 Without dew, maximum 30 days at 95%

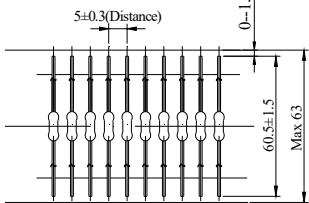
**Vibration Resistance**  
 120 cycles in 1 direction at 1 min. each  
 10-55Hz, 3 directions(X, Y, Z) in total  
 According to MIL-STD-202 Method 201A

**Soldering Parameters**  
 260°C. ≤5 sec (Wave Soldering)  
 350°C. ≤3 sec (Hand Soldering)  
**Soldering Peak:**  
 260°C. 10 sec. (IEC 60068-20)

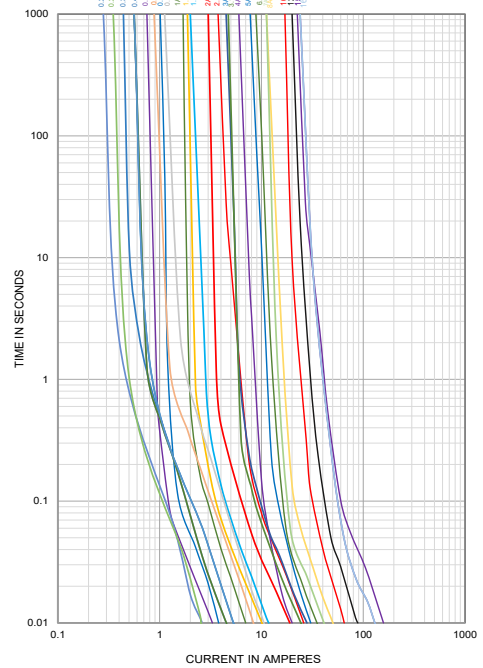
Dimensions (unit: mm)



★:  
 100mA~6.3A : Φ0.60mm  
 8.0A~20.0A : Φ0.80mm



Average Current Curve(I-T Curve)



Time vs Current Characteristics: UL248-14

Rated Current	100%	200%
200mA~16A	>4h	<60s



Electrical Characteristics at 25°C

Amp code	Rated Current	Rated Voltage	Typical Cold Resistance (mΩ)	Nominal Melting I <sup>2</sup> t (A <sup>2</sup> sec)	Breaking Capacity	Approvals				
						cULus	cURus	TUV	PSE	
0200	200mA	125V AC 250V AC	990	0.077	50A@250V AC 50A@125V AC	•	○	○	○	
0250	250mA		680	0.082		•	○	•	○	
0315	315mA		369	0.190		•	○	•	○	
0375	375mA		340	0.200		•	○	•	○	
0400	400mA		270	0.210		•	○	•	○	
0500	500mA		201	0.480		•	○	•	○	
0630	630mA		160	0.930		•	○	•	○	
0750	750mA		87.0	0.093		•	○	•	○	
0800	800mA		62.0	0.564		•	○	•	○	
1100	1.00A		60.0	0.531		•	○	•	○	
1125	1.25A		44.3	1.03		•	○	•	○	
1150	1.50A		33.1	1.60		•	○	•	○	
1160	1.60A		37.84	0.85		•	○	•	○	
1200	2.00A		30.3	2.40		•	○	•	○	
1250	2.50A		20.5	5.83		•	○	•	○	
1300	3.00A		19.0	5.90		35A@250V AC 35A@125V AC	○	○	○	•
1315	3.15A		17.0	5.90			○	•	•	○
1400	4.00A		13.5	4.70			○	•	•	○
1500	5.00A	10.0	8.30	○	•		○	•		
1630	6.30A	9.00	12.3	○	•		○	○		
1700	7.00A	5.88	16.6	○	•		○	○		
1800	8.00A	5.88	21.0	○	•	○	○			
2100	10.00A	5.05	41.0	○	○	○	○			
2120	12.00A	32V AC 16V AC	3.50	78.32	50A@32V AC 100A@16V AC	○	•	○	○	
2150	15.00A		3.01	249.6		○	•	○	○	
2160	16.00A		2.85	169.49		○	•	○	○	

- Note:** (1) Permissible continuous operating current is 100% at ambient temperature of 23°C (73.4°F)  
 (2) The cURus and cULus certification for 100mA~10A only by 125V and 250V AC, for 12A~16A only by 16V and 32V AC; the TUV certification only by 250V AC.  
 (3) The current values used for calculating I<sup>2</sup>T should be within the standard range of 8ms ~ 10ms.

## Ordering Information

Series	Amp Code	Supplementary Code	Qty
211			



**Sales Contact**  
 sls01@betterfuse.com

**Technical Support**  
 Kenny@betterfuse.com

National High-tech Enterprise  
 SC 32C National Technical Committee Member of China  
 Intertek ISO 9001 Certified Company  
 Intertek ISO 14001 Certified Company  
 Intertek QC 080000 Certified Company  
 NQA IATF 16949 Certified Company

国家高新技术企业  
 SC 32C 省内专家组成员单位  
 ISO 9001 认证企业  
 ISO 14001 认证企业  
 QC 080000 认证企业  
 IATF 16949 认证体系